

NCDOT Construction Unit

Visit Our Website | (919) 707-2400

Unit Leadership

Troy Brooks, PE

State Construction Engineer
(919) 707-2402 | tbrooks2@ncdot.gov

Brian Skeens, PE

Assistant State Construction Engineer (Western)
(828) 803-1461 | bcskeens@ncdot.gov

Liam Shannon, PE

Assistant State Construction Engineer (Eastern)
(919) 707-2403 | lwshannon@ncdot.gov

Aaron Earwood, PE

State Bridge Construction Engineer
(919) 730-5138 | aeearwood@ncdot.gov

Michelle Gaddy, PE

State Construction Operations Engineer
(919) 707-2490 | mhgaddy@ncdot.gov

Western Region

Area Construction Engineers:

Divisions 7 & 9

Marcus Kiser, PE
(336) 215-9170 | mkkiser@ncdot.gov

Division 10

Christopher Fine, PE
(336) 225-4266 | lcfine@ncdot.gov

Divisions 11 & 12

Mark Biggerstaff, PE
(828) 803-9954 | mabiggerstaff@ncdot.gov

Divisions 13 & 14

Aaron Powell, PE
(828) 417-2629 | apowell@ncdot.gov

Eastern Region

Area Construction Engineers:

Divisions 1 & 2

Vacant

Divisions 3 & 4

David Candela, PE
(910) 524-4931 | dacandela@ncdot.gov

Division 5

Meredith Hayes, PE
(336) 226-2463 | mdhayes3@ncdot.gov

Divisions 6 & 8

John Partin, PE
(336) 847-1226 | jpartin@ncdot.gov

Bridge Construction Engineers

Western Region:

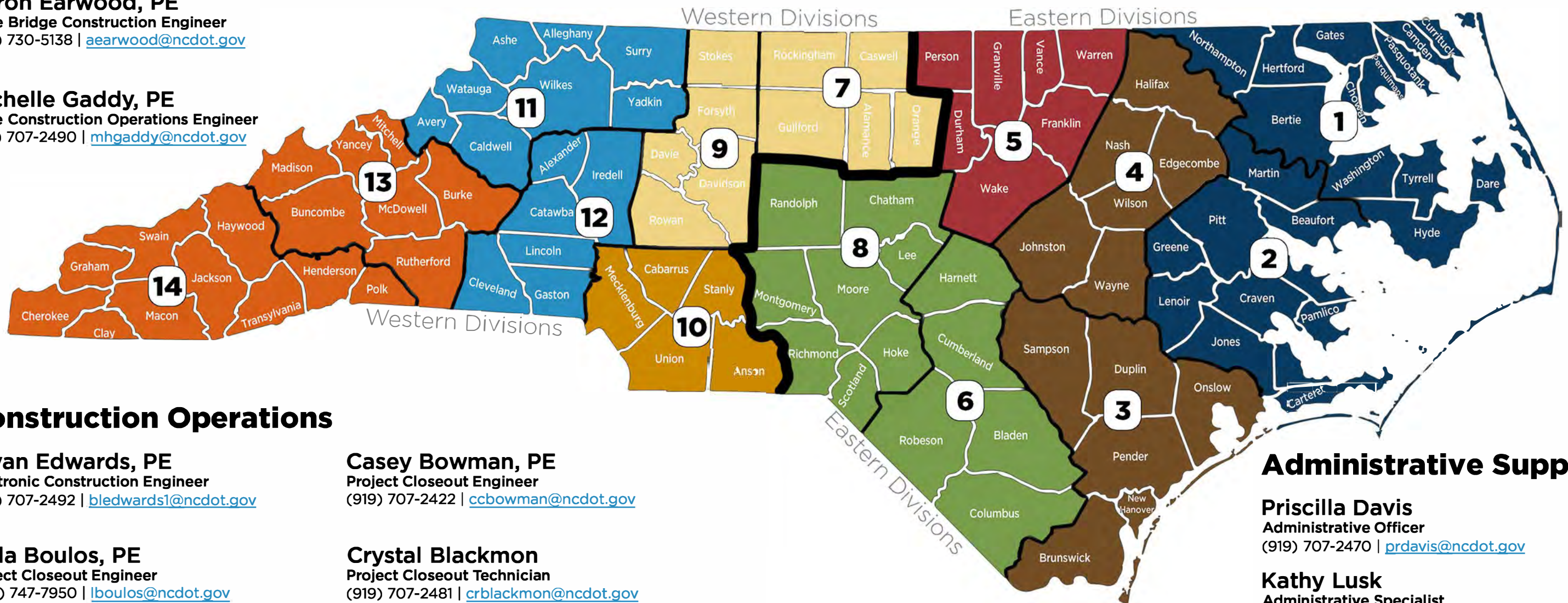
Divisions 7, 9, 10, 12:
Aaron Griffith, PE
(336) 215-9170 | aegriffith@ncdot.gov

Divisions 11, 13, 14:
Tyler Rogers, PE
(828) 593-7028 | trogers1@ncdot.gov

Eastern Region:

Divisions 1-4:
Randy Hall, PE
(252) 514-4759 | rshall1@ncdot.gov

Divisions 5, 6, 8:
Patrick Cheeves, PE
(678) 602-8504 | pjcheeves@ncdot.gov



Construction Operations

Bryan Edwards, PE

Electronic Construction Engineer
(919) 707-2492 | bledwards1@ncdot.gov

Leila Boulos, PE

Project Closeout Engineer
(336) 747-7950 | lboulos@ncdot.gov

Casey Bowman, PE

Project Closeout Engineer
(919) 707-2422 | ccb Bowman@ncdot.gov

Crystal Blackmon

Project Closeout Technician
(919) 707-2481 | crblackmon@ncdot.gov

Administrative Support

Priscilla Davis

Administrative Officer
(919) 707-2470 | prdavis@ncdot.gov

Kathy Lusk

Administrative Specialist
(919) 707-2408 | klusk@ncdot.gov